



# CannaBusiness Laboratories, LLC

2554 Palumbo Dr. Lexington, KY 40509

**Customer:** Cornerstone Agriculture

**Sample Num:**

**Order Num:**

**Sample Name:** Water Soluble Nutrasomal

**Collected Date:**

**External Sample ID:**

**Received Date:** 05/26/20

**Batch Number:**

**COA Released:** 05/27/20

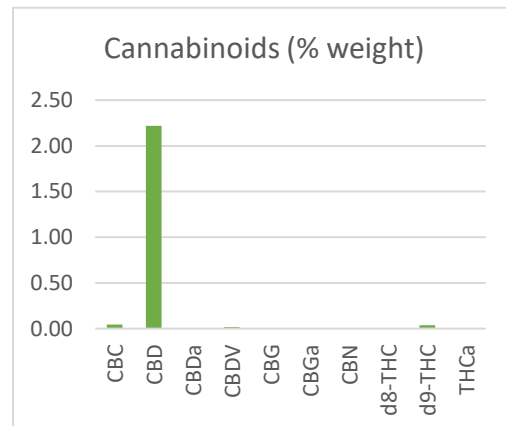
**Product Type:**

**Sample Type:** Concentrate

**Comments:**

## CANNABINOID PROFILE

Analyte	LOQ (%)	% weight	(mg/g)
CBC	0.01	0.05	0.46
CBD	0.01	2.22	22.20
CBDa	0.01	ND	ND
CBDV	0.01	0.02	0.16
CBG	0.01	ND	ND
CBGa	0.01	ND	ND
CBN	0.01	ND	ND
d8-THC	0.01	ND	ND
d9-THC	0.01	0.04	0.39
THCa	0.01	ND	ND
<b>Total Cannabinoids</b>		<b>2.32 %</b>	<b>23.21 mg/g</b>
<b>Total Potential THC</b>		<b>0.04 %</b>	<b>0.39 mg/g</b>
<b>Total Potential CBD</b>		<b>2.22 %</b>	<b>22.20 mg/g</b>



\*Total Cannabinoids refers to the sum of all cannabinoids detected.

\*Total Potential CBD = (0.877 x CBDa) + CBD. \*Total Potential THC = (0.877 x THCa) + THC. \*Total Potential CBG = (0.878 x CBGa) + CBG.

\*Total Potential THC/CBD are calculated to take into account the loss of an acid group during decarboxylation.

APPROVED BY

5/27/2020

DATE

*This product has been tested by CannaBusiness Laboratories using validated testing methodologies. Values reported relate only to the product tested. CannaBusiness Laboratories makes no claims as to the efficacy, safety, or other risks associated with any detected or non-detected levels reported herein. This Certificate shall not be reproduced except in full, without the written permission of CannaBusiness Laboratories. Photo is of sample received by the lab and may vary from final packaging. The results apply to the sample as received.*